



10W LED wall recessed light, IP65, ideal for both indoor and outdoor installation.

Complete 350mA driver.

Supplied with box for concrete installation

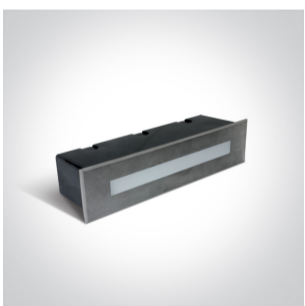
Complies with standard EN60598-1 and any other specific standards.



Dimensions



Gallery






Physical Specification

| | |
|-------------------|-----------------------------|
| Item Group | 19 Wall Recessed & Inground |
| Family | Wall Recessed Pro Range |
| Order Code | 68072C/W |
| Colour | Stainless Steel |
| Material | Stainless Steel 316 |
| Diffuser Material | Glass |
| Shape | Rectangular |

| | |
|--------------------|-------|
| Length | 270mm |
| Width | 63mm |
| Height | 67mm |
| Cutout Hole Width | 253mm |
| Cutout Hole Length | 55mm |
| Recessed wall | Yes |
| Depth Required | 75mm |
| Indoor | Yes |
| Outdoor | Yes |
| IK Rating | 8 |

Electrical Characteristics

| | |
|------------------|---|
| Gear | Built In |
| Fitting + Driver | |
| Input Voltage | 220-240V |
| 50 Hz | Yes |
| 60 Hz | Yes |
| Safety Class |  |
| Power(Watts) | 10W |
| IP Rating | IP65 |
| Light Source | LED built in |
| Dimmable | No |
| F Mark |  |

| | |
|---------------|---|
| Fitting | |
| Input Type | Constant Current |
| Input Current | 350mA |
| Voltage | 26V |
| Safety Class |  |
| Power(Watts) | 9,1W |

| |
|--------------|
| IP Rating |
| Light Source |
| LED Type |
| LED Brand |
| F Mark |

| |
|---|
| IP65 |
| LED built in |
| SMD 2835 |
| Edison |
|  |

Gear

| |
|------------------|
| Gear Type |
| Input Voltage |
| 50 Hz |
| 60 Hz |
| Power(Watts) |
| Power Factor |
| Constant Current |
| 350mA |
| IP Rating |
| Safety Class |
| Housing Material |
| Brand |
| Protection |

| |
|---|
| Led Driver |
| 220-240V |
| Yes |
| Yes |
| 6-9W |
| 0,5 |
| Yes |
| 17-26V |
| IP20 |
|  |
| Plastic |
| Eaglerise |
| 0 |

Illumination Data

| |
|----------------------|
| Colour Temperature |
| Lumen Output |
| Light Efficiency |
| CRI |
| Illumination Diagram |

| |
|---|
| 3000K |
| 200lm |
| 20lm/W |
| 80 |
|  |

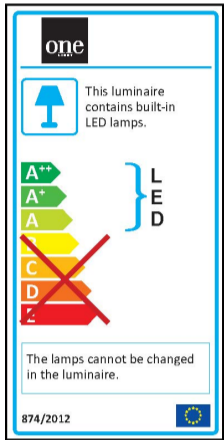
Packing Info

| |
|------------|
| Box Length |
|------------|

| |
|-----|
| 9cm |
|-----|

| | |
|------------|---------------|
| Box Width | 7,5cm |
| Box Height | 29cm |
| Pcs/Carton | 12 |
| Barcode | 5291889057734 |
| HS Code | 9405409900 |

Energy Label



Certification & Warranty

| | |
|----------------|---------|
| Warranty | 2 Years |
| Weee Directive | Yes |